

# GENERAL CATALOGUE



# We make Wireless, Electric, heavy Duty Jacks

We are creating the most technologically advanced jacks  
that will make your life easier.

With the VOLTA ion family of jacks, you have wireless  
control and lithium battery powered system, there is no  
compressor needed or any hose that limits you  
at your work space.

## Features and Benefits

Eliminate tripping hazards

Minimize workers comp issues

Use it in or outside the shop

Works under the rain

Simultaneously lift multiple vehicles on jack stands  
without having to reconnect the jack

Increase profits and revenue

Minimize labor costs

Reduce electric costs: no compressor needed



Lifting  
your  
future



# THE BEAST



**Min. High:** 18.00 cm | 7"

**Max. High:** 26.75 cm | 10,5"

**Capacity Stage 1:** 37ton | 80.000lb

**MFPN:** VJB-0101

*Includes Adaptor Kit.*

3/4" - 1.90cm | 3" - 7.60 cm |

6" - 15.25 cm | L Bracket



# THE BEAST2



**Min. High:** 18.00 cm | 7"

**Max. High:** 35.56 cm | 14"

**Capacity Stage 1:** 37ton | 80.000lb

**Capacity Stage 2:** 23ton | 50.000lb

**MFPN:** VJB-0102

*Includes Adaptor Kit.*

**3/4" - 1.90cm | 3" - 7.60 cm |**

**6" - 15.25 cm | L Bracket**



# THE BEAST3

Front view



Side view



Iso view



**Min. High:** 18.00 cm | 7"

**Max. High:** 45.09 cm | 17.81"

**Capacity Stage 1:** 37ton | 80.000lb

**Capacity Stage 2:** 23ton | 50.000lb

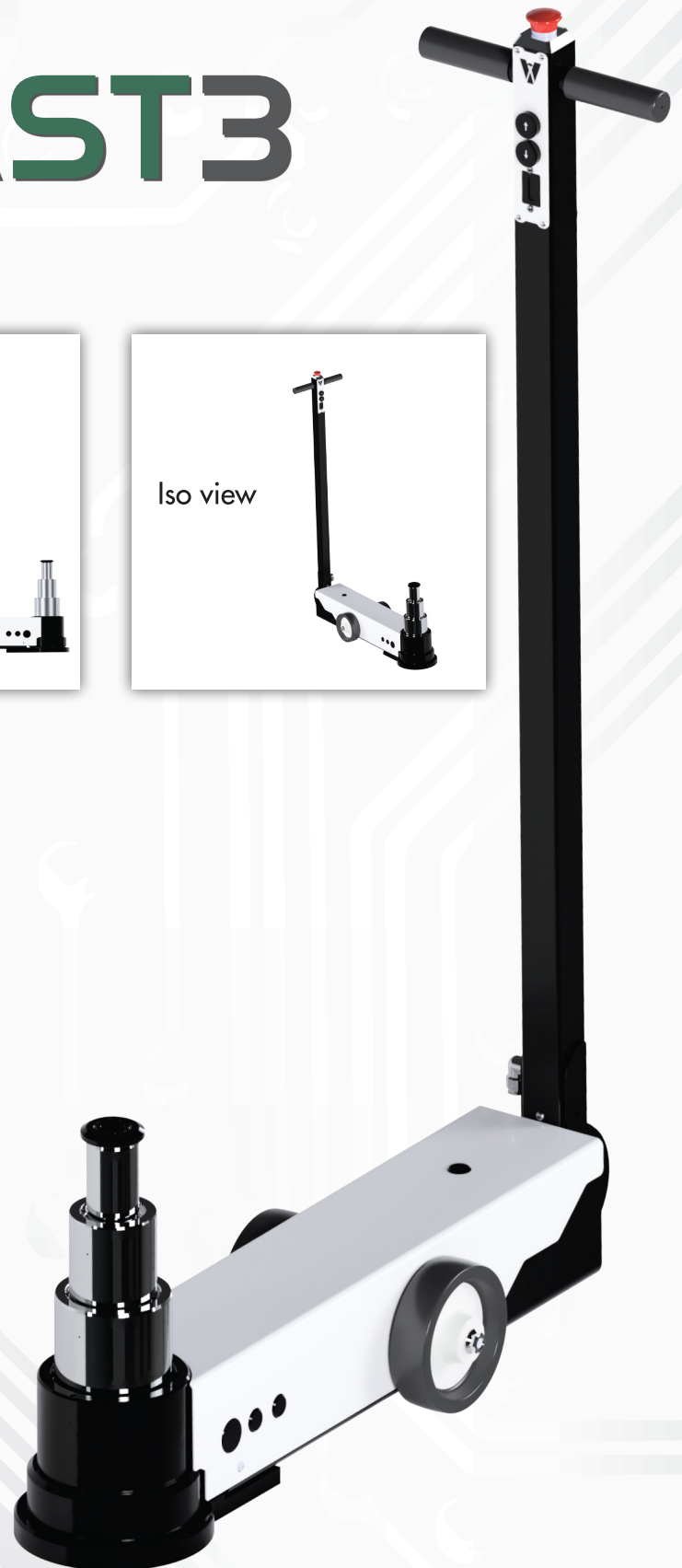
**Capacity Stage 3:** 12ton | 25.000lb

**MFPN:** VJB-0103

**Includes Adaptor Kit**

**3/4" - 1.90cm | 3" - 7.60 cm |**

**6" - 15.25 cm | L Bracket**



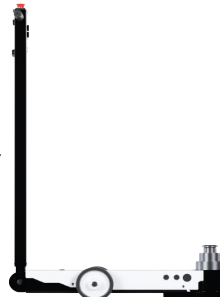


# LOPRO3

Front view



Side view



Iso view



**Min. High:** 13.25 cm | 5"

**Max. High:** 25.40 cm | 10"

**Capacity Stage 1:** 37ton | 80.000lb

**Capacity Stage 2:** 23ton | 50.000lb

**Capacity Stage 3:** 12ton | 25.000lb

**MFPN:** VJL-0103

**Includes Adaptor Kit**

**3/4" - 1.90cm | 3" - 7.60 cm |**

**6" - 15.25 cm | L Bracket**



# CHARGER 24V

Multi-Function wall mount charging station is a very practical way to recharge your **VOLTA ion** jack.

The unit offers connectivity to multiple **VOLTA ion** systems.

**MFPN:** VC110-024WM



Lifting  
your  
future



# ADAPTORS

Total Length: 9,75" | 24,75 cm

## Adaptor 3/4" - 1.90cm

*MFPN:* VJA-1-2



## Adaptor 3" - 7.60cm

*MFPN:* VJA-3



## Adaptor 6" - 15.25cm

*MFPN:* VJA-6



## L Bracket

*MFPN:* VJA-L





# ADAPTOR KIT

**Includes:**  
**3/4" | 3" | 6"**  
**Adaptors**  
**and L Bracket**

*MFPN:* VJA-KIT



# PORTABLE ADAPTOR HANDLE

*W/ and W/O flashlight*

***W/flashlight:***

***MFPN: VJA-FSH***

***W/O flashlight:***

***MFPN: VJA-APT***

*Includes Adaptor Kit*

*3/4" - 1.90cm | 3" - 7.60 cm |*

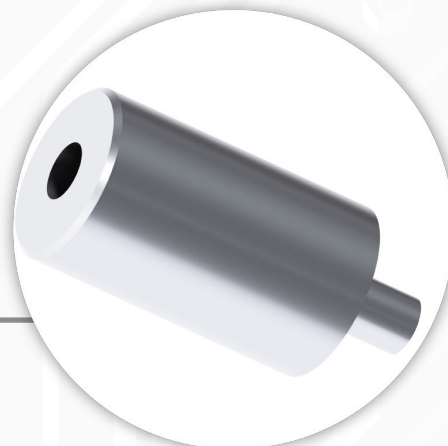
*6" - 15.25 cm | L Bracket*



# ACCESSORIES

## Extension 5" -12.7 cm heavy duty

*MFPN:* VJA-HD5



## Rear/Front axle adaptor

*MFPN:* VJA-HDRFA

